

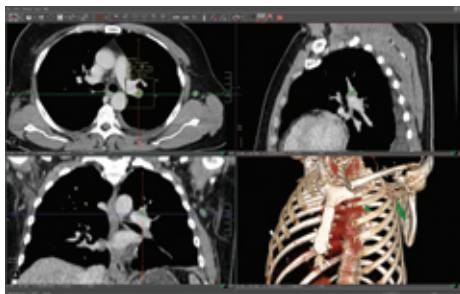
Volumetric analysis of lymphnodes

Definiens LymphExpert™ Version 2.0 offers an accurate assessment of patient response to cancer treatment.

Definiens is a leading provider of image analysis software. The company's founder, Nobel Laureate Gerd Binnig, developed a novel technology modeled on human cognitive processes to extract intelligence from images. Instead of examining an image pixel by pixel, it recognises groups of pixels as objects, picking out shapes, colours and textures. The technology analyses the relationships between objects of interest to make intelligent inferences. Definiens software applications build on this technology and are ideally suited to screen, identify, diagnose and assist in the treatment of cancer.

When metastatic cancer is found early, patients have a higher chance of successful treatment. Tumors and tumor progression are evaluated according to WHO and RECIST guidelines, which are the established standard for assessing patient responses to cancer treatment. However, it has become obvious that one and two-dimensional criteria often provide insufficient data on cancer progression. Because tumors do not grow uniformly, changes in the tumor's diameter do not always represent an accurate indication of tumor growth.

Changes in the shape and distribution of lymph nodes are key to



Definiens LymphExpert 2.0 assesses patient response to cancer treatment.

evaluating cancer progression. Definiens LymphExpert Version 2.0 automatically analyses the properties of lymph nodes according to RECIST and WHO criteria. The software also quantifies changes in lymph node volume over time. An accurate analysis of lymph node size allows radiologists to detect metastasising cancer at an early stage, which allows for earlier evaluation of treatment options, and potentially translates to personalised treatments.

New to Definiens LymphExpert Version 2.0 is the capability for side-by-side comparisons of images, taken at different stages of time. Data can also be imported from a range of imaging devices and be accessed remotely at home or office work stations, contributing to faster analysis and lower costs. Definiens LymphExpert provides accurate and reproducible results to radiologists and other medical experts working in cancer centers, hospitals, pharmaceutical companies and research organizations worldwide. ■

Further information

Definiens AG

Website: www.definiens.com

